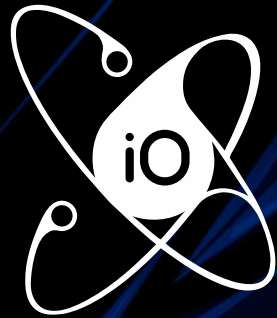


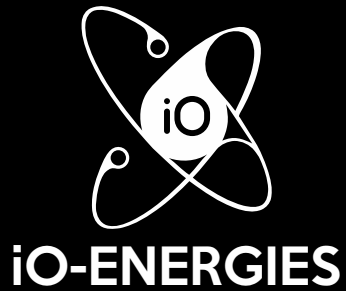
eQOpED



iO-ENERGIES

PRESENTATION





Operation description of electromagnetic fuel catalyst «EQOPED» from iO-ENERGIES



For many decades, many scientists and companies have been and are developing improvements to internal combustion engines to maximize engine power while reducing fuel consumption and consequently lowering emissions.



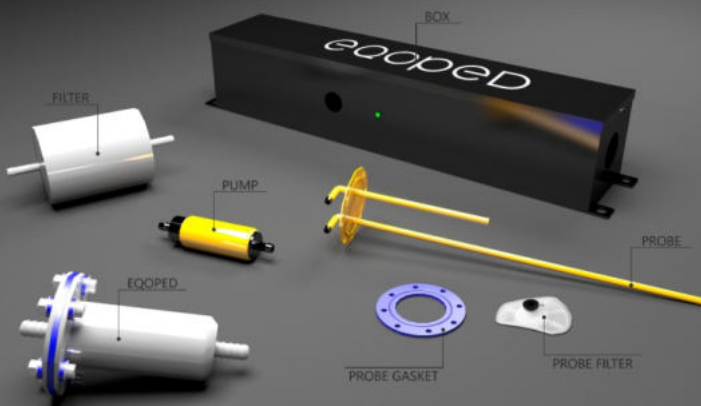
In recent years, vehicle manufacturers have faced enormous competition in terms of quality and cost of finished products, which has led and leads to the only way to reduce fuel consumption and emissions is to reduce the weight of all components and parts of vehicles, which often have a short service life.



Direct fuel injection, two spark plugs per cylinder or glow electrode in diesel engines, exhaust gas catalysts, lambda probes, Disa flaps, instantaneous air flow sensors, injector pump, high pressure fuel pump and many others are invented and implemented in production to obtain low fuel consumption and consequently low emissions.



It took iO-ENERGIES specialists 10 years of daily work on the EQOPED project to achieve results in reducing harmful emissions into the atmosphere and naturally lowering fuel consumption.



What did we end up with and how does it work?

EQOPED, reduces fuel consumption, as we claim, from **21.45%** to **29.31%**, but we have higher figures than claimed.

With this huge reduction in fuel consumption, we get a more powerful engine in all dimensions, such as maximum engine power (HP), increased engine torque (NM), reduced engine noise (DB), with almost complete combustion of any type of fuel, which makes the piston group and exhaust system almost perfectly clean with a longer engine life.

Carried out the most severe tests in Italian laboratories that are certified by TUV, the **EQOPED** device has passed the electromagnetic test for compatibility with any component of the electronic systems of vehicles in the State Electrotechnical Laboratory Intec, which also tested the following endurance disciplines:

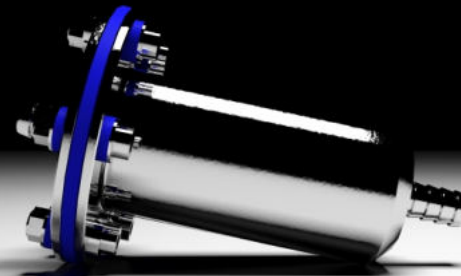
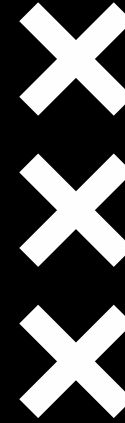
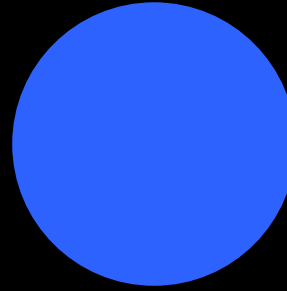
Vibration test; salt wet chamber test; temperature tests from -50 degrees Celsius, to +180 degrees Celsius, which allowed the specialists to issue documentation for approval by the Automotive Industry of the UK (VCA) and Italy (Acredia).

In testing the **EQOPED** device, similar on-board battery power systems and fuel connections with full fuel capacity and a continuously running fuel pump were directly connected.

The results of the conclusions are striking to this day, due to the fact that the device does not consume any part of the on-board network or battery energy.

Question: Why do I need to connect the device directly to the battery if the battery energy is not consumed by the device?

Answer: The higher the battery capacity, the higher the efficiency of the device in terms of fuel economy and emission reduction.



WHAT DID WE GET?
WHAT DID WE GET?
WHAT DID WE GET?



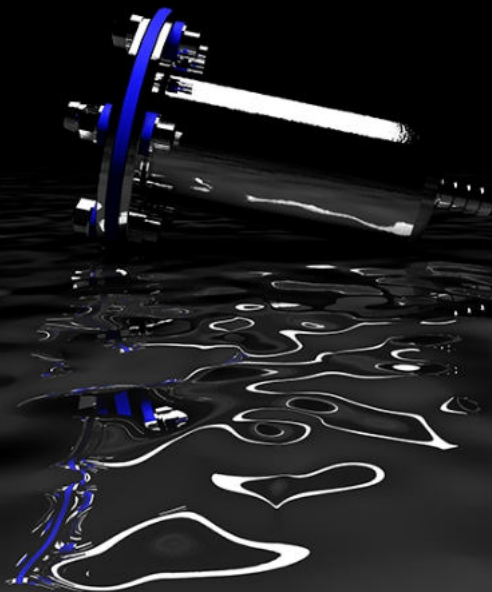
The principle of operation of the device. Physical and chemical processes known and newly discovered in **IO-ENERGIES**

PRINCIPLE

PRINCIPLE

PRINCIPLE

1. The unit does not have any magnets, coils, generators, rotating parts or electronic circuits or components.
2. The device commutes an eddy magnetic field, which is not present on the outside of the device and this process is initiated by the flow of any fuel.
3. The device polarizes the fuel into positive and negative ions, which once in the engine cylinders explode completely from the ignition spark or compression in a diesel engine.
4. The device reduces fuel viscosity by 5.46%, which gives at any temperature of outside air or fuel temperature, easier volatility of fuel in the cylinders, which leads to better mixing with air. This process allows starting the engine in any temperature conditions, which completely eliminates detonation of the engine in any modes.
5. The device allows you to get a more powerful engine due to lower fuel consumption, but with greater recoil of the piston from the combustion chamber, which becomes immediately noticeable after installing the device.
6. Needle point effects (we try to state the unknown principle as far as possible) leads to order oxidation processes during fuel storage in the fuel tank, refueling stations, fuel lines, which are made of various metals and plastics. The effect makes fuel more aggressive getting into the combustion chamber and prevents the formation of exhaust fouling on the piston group and exhaust system.
7. Fuel structuring a chemical lattice process that, from so-called chaos, results in a well-defined fuel formula that is ready to maximally explode in the cylinder from a small amount.
8. The device does not create any resistance to the flow of fuel and does not interfere with the operation of the fuel pump or the natural passage of fuel from the fuel tank to carbureted engines.
9. The device does not require service or replacement of any components and is composed of high-tech materials.
10. It is possible to install the device on the fuel tank check valve of cars and trucks, which leads to multiple circulation of fuel through the device and consequently to maximum fuel treatment.
11. Fuel efficiency from the device processing of our company, can be maintained for 24 hours, after disconnecting the device from the battery.
12. The device has a reliable construction, which guarantees tightness under any load up to 25 atmospheres.



13. The device has gaskets made of special rubber of increased strength and characteristics, which allow to prevent depressurization of the device in any aggressive liquids.

14. The gaskets have to protect the device from stray currents or static electricity.

15. Internal components of the device are made of special materials, which are produced exclusively for our company on the basis of patents for the invention of the device and components of the device.

16. All materials and metals used, have high corrosion resistance under all operating conditions.

17. The device can be completed with a special module for trucks, combines, tractors, construction equipment, generators of electrical energy, engines of any marine vessels.

18. The device has a lineup of 4 devices for motorcycles and scooters and 10 different models for vehicles with engines with working volume from 1000 cm³.

19. The use of the device on already operated vehicles will result in engine cleaning after 300-500 km.

20. The device improves the dynamic performance of vehicles, due to more efficient engine efficiency.

21. electrical connections with special heat-resistant insulation and copper terminals coated with a special layer will reliably protect the invisible process and contact from oxidation.

22. The use of the device on vehicles with Euro 3-4-5 standards will bring the emission values to the level of Euro 6-7.

23. Simplicity of connections, small dimensions, allow the device to install almost any available space, with a distance from the electromagnets at 15-20 cm.

24. The **IO-ENERGIES** device has no service life limitations, and the factory warranty is 3 years or 100 000 km of mileage.

WARNING!

IN ORDER TO AVOID DAMAGE TO THE DEVICE,
PLEASE CAREFULLY READ THE FACTORY
INSTRUCTIONS FOR INSTALLATION AND OPERATION.

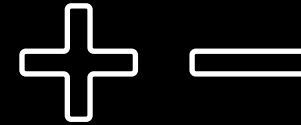
OPENING THE DEVICE BY YOURSELF

WILL VOID THE WARRANTY!

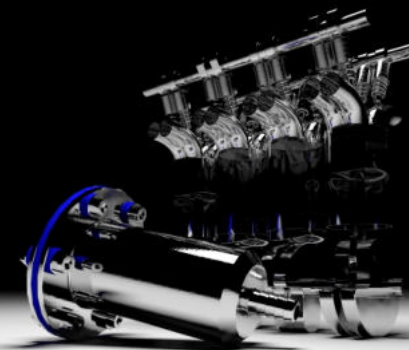
W A R N I N G !

W A R N I N G !

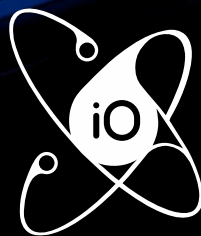
W A R N I N G !



eaoped
ELECTROMAGNETIC CATALYST



MADE IN ITALY



iO-ENERGIES

Website: io-energies.eu

E-mail: info@io-energies.eu

Tel.: +39 327 806 1880 | +39 329 818 4340

Legal address: Via Provinciale, 26 25079 Vobarno (BS) Italy

**Thank you for your interest in iO-ENERGIES product
and we wish your business prosperity!**

THANKS
THANKS

THANKS
THANKS